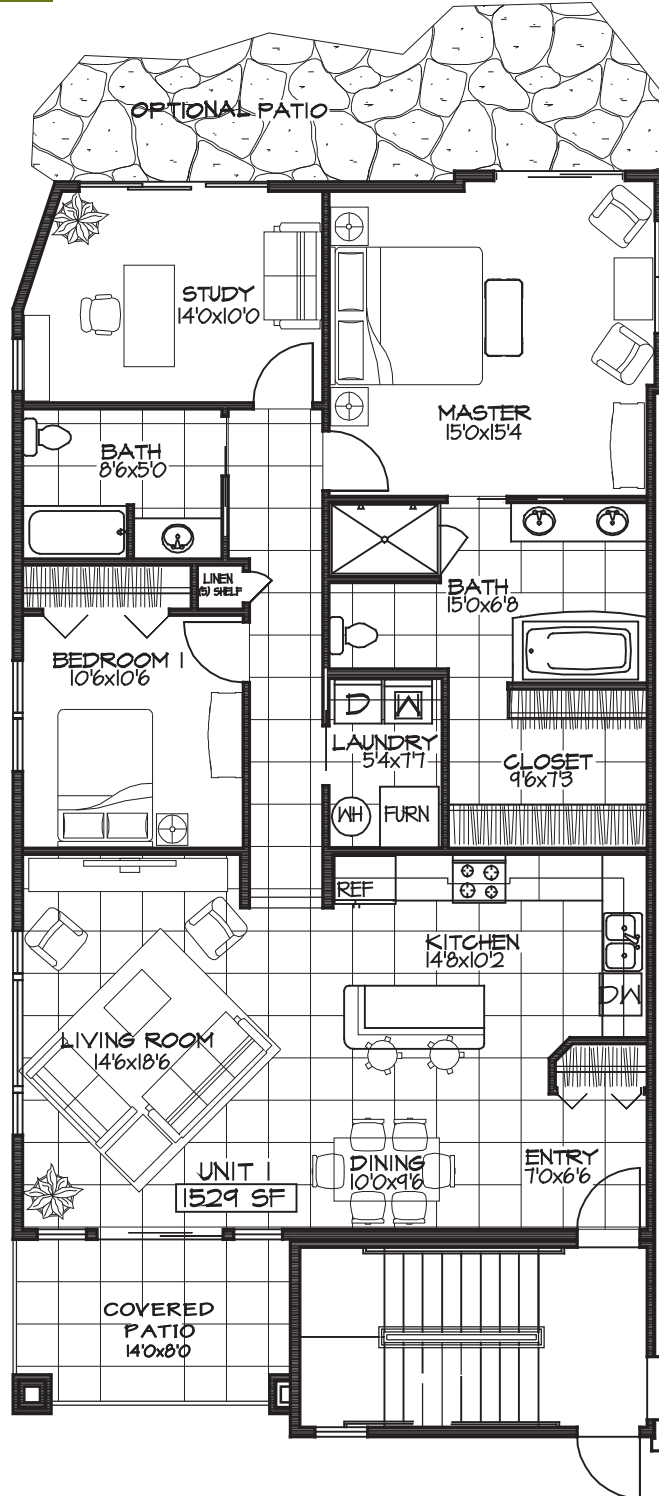


The Greenstones  
At  
**NoBo**

# Building A1

## UNIT 1 FLOOR PLAN

1,529 SF, 3B/2B FIRST FLOOR, ONE-LEVEL



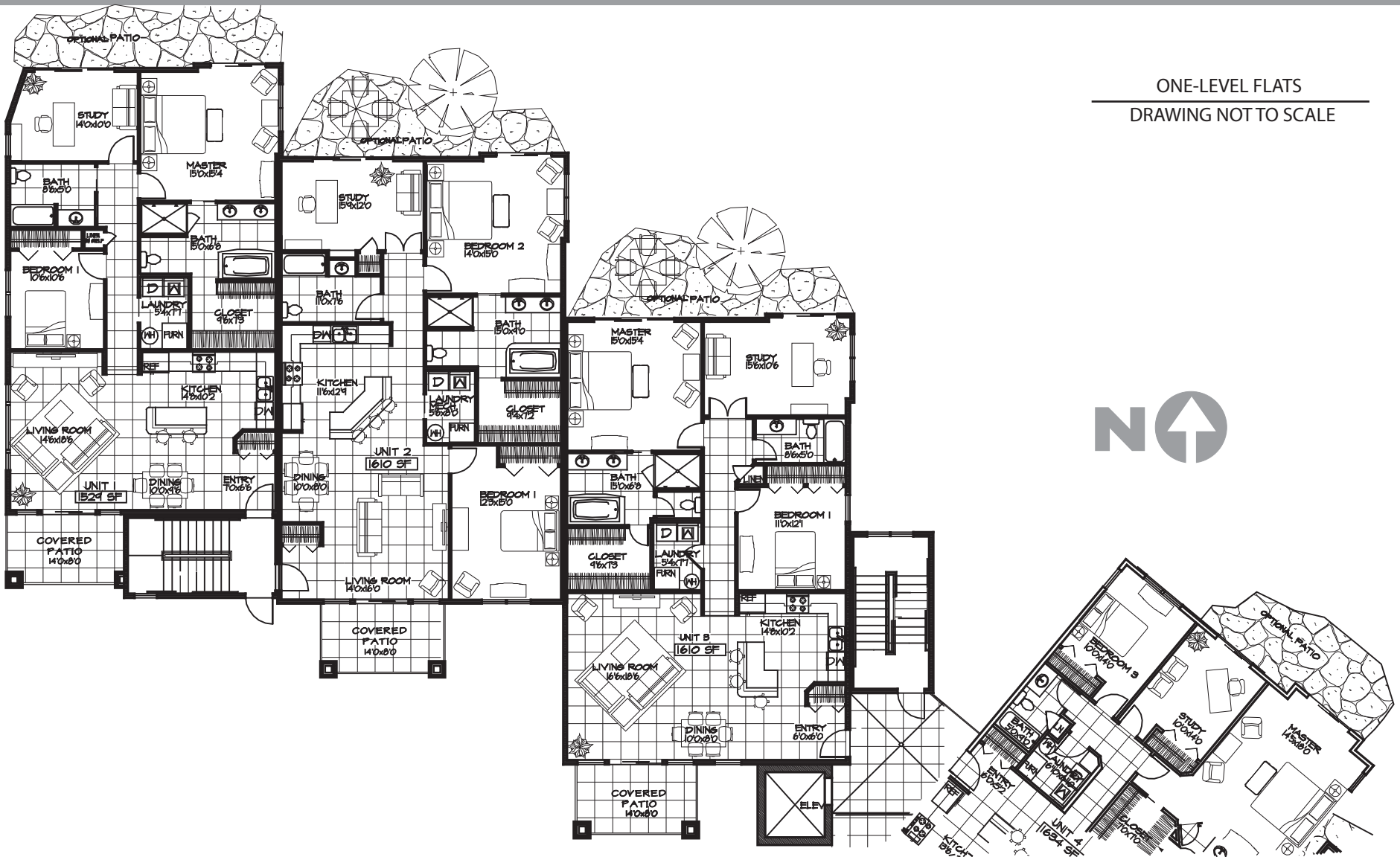
**PorchfrontHOMES.COM**

Call Deanna Franco for More Info (720) 422-5131

**Note:** Floor plan shows optional features such as patios, furnishings, fireplaces, built-ins, refrigerators, clothes washer & dryers, etc. Please see standard specifications for a list of current standard inclusions. Floor plans, elevations, base pricing, lot premiums, standard inclusions & specifications, option pricing, square footage, availability and terms & conditions are subject to change without prior notice. All plans, renderings and landscaping are artist's interpretations only and may not reflect the actual finished product. All sizes, window locations, square footage, and dimensions are approximate. Drawings may not be to scale. All designs are the property of Porchfront Homes at Sanitas Terrace, and may not be used for any purpose unless expressly consented to in writing by Porchfront Homes at Sanitas Terrace, LLC.

# BUILDING A1 ~ 1ST FLOOR at The GREENSTONES

ONE-LEVEL FLATS  
DRAWING NOT TO SCALE



Note: Floor plan shows optional features such as patios, furnishings, fireplaces, built-ins, refrigerators, clothes washer & dryers, etc. Please see standard specifications for a list of current standard inclusions.



- 3 UNITS**
- UNIT 1: 1529 S.F. 3 BR/2 BA
  - UNIT 2: 1610 S.F. 3 BR/2 BA
  - UNIT 3: 1610 S.F. 3 BR/2 BA

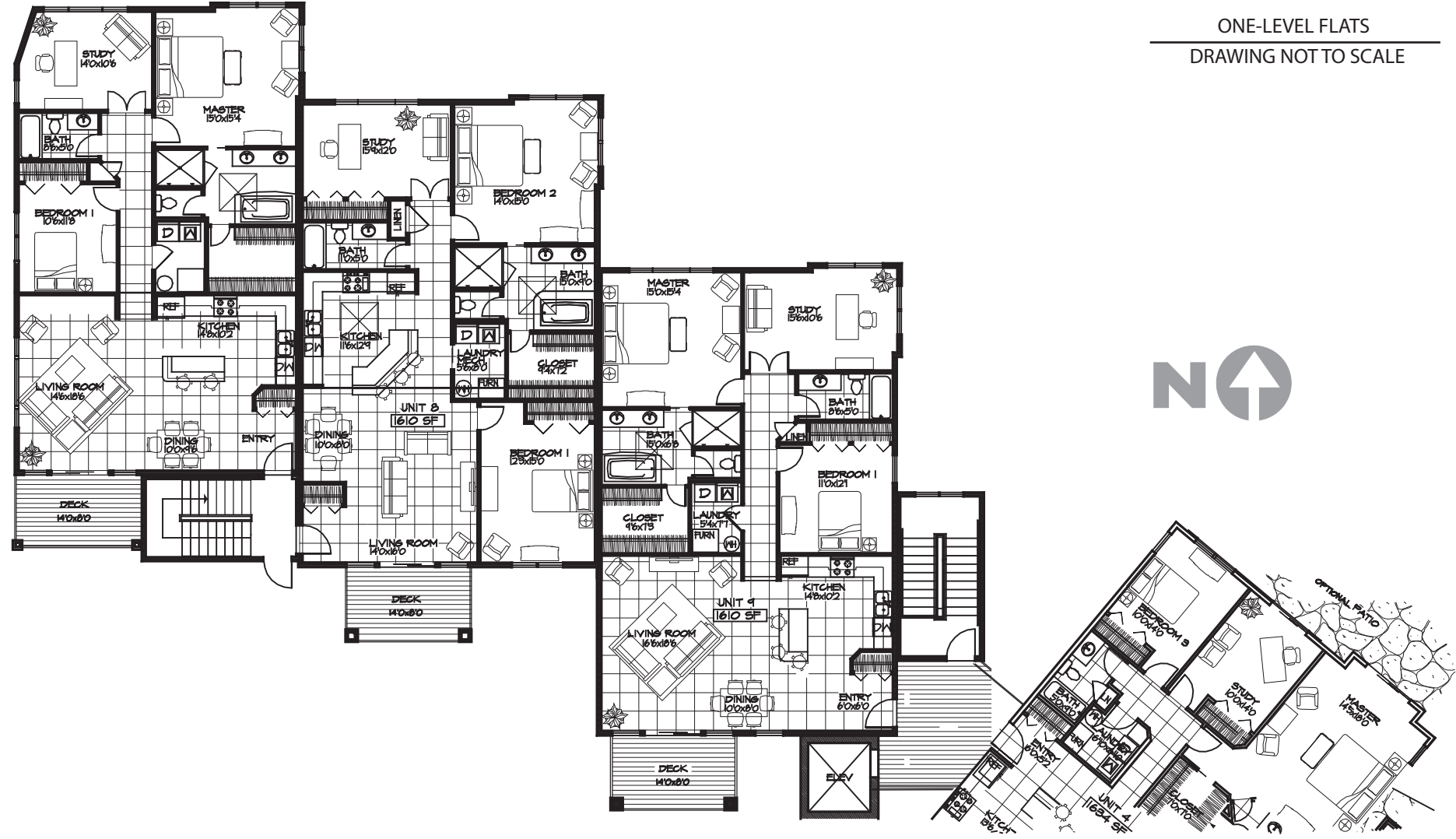
[www.TheGreenstones.com](http://www.TheGreenstones.com)  
 For Home Sales Please Contact:  
 Deanna Franco 720.422.5131



Floor plans, elevations, base pricing, lot premiums, standard inclusions & specifications, option pricing, square footage, availability and terms & conditions are subject to change without prior notice. All plans, renderings and landscaping are artist's interpretations only and may not reflect the actual finished product. All sizes, window locations, square footage, and dimensions are approximate. Drawings may not be to scale. All designs are the property of Porchfront Homes at Sanitas Terrace, and may not be used for any purpose unless expressly consented to in writing by Porchfront Homes at Sanitas Terrace, LLC.

# BUILDING A1 ~ 2ND FLOOR at The GREENSTONES

ONE-LEVEL FLATS  
DRAWING NOT TO SCALE



Note: Floor plan shows optional features such as patios, furnishings, fireplaces, built-ins, refrigerators, clothes washer & dryers, etc. Please see standard specifications for a list of current standard inclusions.



- 3 UNITS
- UNIT 7: 1529 S.F. 3 BR/2 BA
  - UNIT 8: 1610 S.F. 3 BR/2 BA
  - UNIT 9: 1610 S.F. 3 BR/2 BA

[www.TheGreenstones.com](http://www.TheGreenstones.com)  
For Home Sales Please Contact:  
Deanna Franco 720.422.5131



Floor plans, elevations, base pricing, lot premiums, standard inclusions & specifications, option pricing, square footage, availability and terms & conditions are subject to change without prior notice. All plans, renderings and landscaping are artist's interpretations only and may not reflect the actual finished product. All sizes, window locations, square footage, and dimensions are approximate. Drawings may not be to scale. All designs are the property of Porchfront Homes at Sanitas Terrace, and may not be used for any purpose unless expressly consented to in writing by Porchfront Homes at Sanitas Terrace, LLC.